



FLASH POINTS

Lawn Mower Safety & Fire Prevention - July 2020

US Consumer Product Safety Commission reports that more than 60,000 people, including 9,000 children, are injured each year from the unsafe operation of lawn mowers in the United States. With the height of lawn mowing season comes the risk of lawn mower-related accidents and fires. Taking a few precautionary steps to reduce the risk of an accident will help in making your lawn mowing season go smoothly.

SAFETY:

- Shields should be kept in place to prevent contact with blades and other moving parts.
- Do not allow children to ride as passengers, and have them stay indoors or at a safe distance from the mowing area at all times.
- Prevent injuries from flying objects such as stones, sticks and toys by picking up objects prior to starting.
- Operators should wear pants, sturdy shoes (not sandals), and, depending on lawn surfaces, gloves, and hearing and eye protection are recommended.
- Follow age recommendations for young operators: a minimum age of 12 years for walk-behind mowers and 16 years for riding mowers.



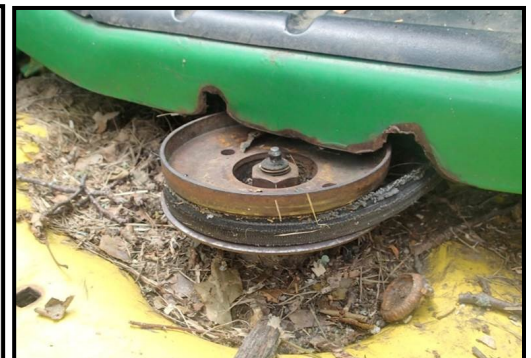
FIRE HAZARDS:

When finished mowing, it is good practice to utilize a leaf blower, compressed air or other means to clean off combustible grass clippings from the deck and engine compartment, paying special attention to areas around the exhaust system, belts and pulleys.

It is also recommended to give your lawnmower adequate time to cool down before placing it back into a garage. An hour is generally sufficient. Many fires have been witnessed within 10-25 minutes after the mower was parked and shut off.

MAINTENANCE:

- When fueling your mower, be sure the engine is off and engine components are cool. Hot engine components are capable of igniting gasoline vapors produced from refueling.
- Monitor belts for uneven wear, cracks or missing portions of rubber.
- Monitor mower deck and frame surfaces for worn pulley and bearing races. If you notice signs of rubbing as a result of friction, address immediately as this may be a sign of a mechanical issue which could present a fire hazard.
- Follow your manufacturers' guidelines for grease zerks that are on your machine. This may require daily lubrication depending on usage.



JOHN DEERE RECALLS ZTRAK RIDING MOWERS DUE TO LACERATION HAZARD

This recall involves John Deere model Z335M, Z345M, Z345R, Z355R, and Z375R residential ZTrak™ riding mowers. The model number and “John Deere” are printed on the front of the green and yellow colored riding lawn mowers. The serial number begins with 1GX and is printed on the rear frame of the machine near the engine. The mower’s blades can continue to rotate under power when the operator leaves the seat, posing a laceration risk to the user or bystander. Consumers should stop using the recalled riding mowers and contact an authorized John Deere dealer for a free repair. John Deere is contacting purchasers of the recalled lawn mowers directly.



BRIGGS & STRATTON RECALLS SNAPPER REAR ENGINE RIDING MOWERS DUE TO INJURY HAZARD

This recall involves a Snapper Rear Engine Riding Mowers with rear engines and a 33 inch mower deck. The riding mowers are red and black. Model number 2691526, Briggs & Stratton and 33” are printed on a white label the back of the mower. SNAPPER is printed on the front of the mower. A faulty blade engagement lever can keep the lawnmower blade engaged after the release of the foot activated disengagement pedal, posing an injury hazard. Consumers should immediately stop using the recalled riding mowers and contact Briggs & Stratton for a free inspection and repair.

EXCEL INDUSTRIES RECALLS ZERO-TURN MOWERS DUE TO FIRE HAZARD

This recall involves zero-turn mowers sold under the Hustler® FasTrak®, Hustler® FasTrak® SDX, BigDog® Stout, and BigDog® Stout MP brand names. Hustler mowers are yellow, and BigDog mowers are red. The brand names are on a decal located in the front below the seat. Model name and serial numbers can be found on a tag located on the right side of the mower behind the seat. The recalled mowers have serial numbers between 18058001 and 19028225. A wire tie underneath the seat could damage the fuel line, posing a fire hazard. Consumers should immediately stop using the recalled mowers and contact a BigDog or Hustler authorized dealer to schedule a free repair. Excel is contacting all known purchasers directly.

